

WARRANTY CARD

Model No.:..... Lot No.:.....

Invoice No.:..... Date of Purchase.....

Purchased By:..... Contact No.:.....

Address.....

Dealer's Name.....

Dealer's Sign & Stamp

Register your product
to claim warranty

* Terms & Conditions apply

Passim Lifesciences Ltd. warrants this units free of any defect in material, workmanship and operation, under normal use, for a period of one year from the date of purchase. If any part become defective during the warranty period Passim Lifesciences Ltd. will repair or replace (if not repairable) the same, free of cost. This shall not apply to any parts that are considered as expandible or deteriorable in the course of normal use. Passim Lifesciences Ltd. shall be relieved of any liability and warranty shall cease to apply if :

- This is not used in accordance with the instructions in the operational manual.
- It is used with any equipment not complying with the specification of this unit.
- It is not regularly maintained.
- The unit is disassembled, repaired or operated by person not authorized by Passim Lifesciences Ltd.
- Damage caused due to negligency.
- The unit is operated in corrosive materials or in the harmful atmosphere.
- The warranty card is not filled completely and produced at the time of warranty claim.

Symbols

- Medical Device Refer Instructions Manual Lot No. Keep Away From Sunlight
- No Trash Manufactured By Serial No. Manufacturing Date Warning/ Caution

Manufactured by:**Passim Lifesciences Ltd.**

Plot No. 45, Ind. Area, Phase -II, Panchkula -134113, Haryana- INDIA

File No.: Passim-Panch-HR/M/MD/010152

For any Complaint/ Suggestion please contact:

Customercare Number: 1800 309 3009, Timing: 9am-7pm, Mon. - Sat.

Email ID: customercare@drodin.in, Website: www.drodin.in

IM/OMP/53-01

**Breast Pump Manual**

MODEL NO.-OMP01

INSTRUCTION MANUAL

Please read instruction manual before use

Intended Use :

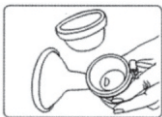
A breast pump is a device which is used when you're breast feeding to express, or remove, your breast milk that you can store for later use.

Product features

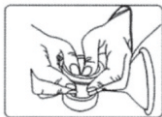
Breast milk contains a variety of antibodies. Newborns can obtain immunity from breast milk. Breast milk is the best choice for baby growth. But sometimes you are not convenient to feed your baby directly. The breast pump can provide convenience for you, like natural sucking. And Soft breast silicone can knead breast, which can reduce the pain during breast sucking and overcome nipple retraction effectively, Make breast feeding mothers healthier and more beautiful.

*Innovative design breakthrough the traditional way of sucking.

*Square with Ergonomic, like a baby's gentle sucking. That is free of bisphenol-A, safe and healthy.

Pump parts Installation procedures

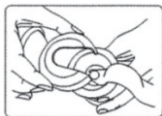
1. Install the silicone cylinder in the 3-way connector



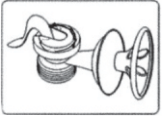
2. Make sure it's firmly sealed



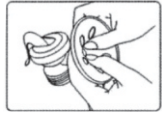
3. Place the handle on the pull ring and tighten it with the handle bracket on the connector



4. Fix the lid on the suction bowl and fasten it



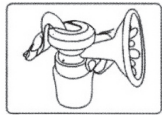
5. Insert the 3D massage pad installed in the pump through the bell on the connector



6. Push the 3D massage pad into the vintage of the pump connector



7. Put the bottle in the bottle mouth screw threaded through the bottom of the pump connector

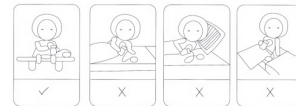


8. Holding posture

2



9. Covering with the cover

Please Keep the Right Posture**Operation Method**

1. Please keep comfortable sitting posture and relax.
2. The pump assembled horn cover central alignment and close to breast nipple.
3. Hold the handle with the most comfortable strength to suck the milk
4. Please use the relevant parts after disassembly and cleaning for the next use.

Trouble Shooting

1. Determine whether the breast affixed to the horn cover.
2. Check the 3D massage pad, duckbill valve, cylinder, cylinder rod handle is installed in place.

Breast Milk Storage

After the breast milk has been absorbed, the storage cover is sealed tightly or the storage strip is sealed, and the refrigerator must be put into the refrigerator immediately, and then it can be refrigerated or frozen. The newly collected breast milk should not be kept in the greenhouse. The refrigerator is kept for about 3-5 days, and the refrigerator is kept for about 2 weeks.

Breast Milk Heating

After thawing or heating pump heating, use warm water, do not use micro-blog or water heating, so as to avoid the loss of nutrients. After heating breast milk can feed a baby.

Breast Milk Storage and Heating Notice

1. If you want to freeze breast milk, do not fill the bottle or bag. Install it to 3/4 and leave room for icing expansion. Do not keep breast milk on the refrigerator side door.
2. In order to retain the nutritional components of breast milk the night before the frozen milk into the freezer thawed using warm water (hot 37 degrees) to warm the bottle or bag.
3. Gently shake the bottle or bag, so that the separation of fat can be evenly mixed in the milk.

3

4. Do not put frozen breast milk into the microwave oven or boiling water heating, so as not to cause loss of nutrients, but also easy to burn baby.
5. The thawing of the milk can not be frozen again please do not fresh breast milk and thawed breast milk mixed together.

Using Notice

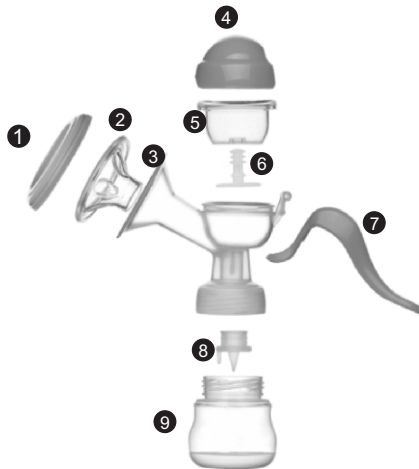
1. Breast less stage using breast pump. please follow the guidance of a doctor to use
2. Disassembling or assembling, please be in accordance with the assembly sequence of each part to complete: disassembly, cleaning, please be careful of smaller parts, to avoid the loss can not be assembled or unable to operate.
3. Please put this product in infants and young children is not easy to touch the place
4. According to individual physical control suction size, with the most comfortable suction to complete the milk suction work
5. Please do not excessive breast milk, in order to prevent breast injury
6. If severe pain is caused by use, please ask the medical staff immediately
7. Please do not use this product as open breast milk instrument, The breast pump is to help alleviate postpartum mothers milk up painful tools and extended breast feeding time helper, premise is that it has plenty of milk and smooth breast. Some mothers in early motherhood, usually breast not smooth (which is partly due to congenital inverted nipples caused) or milk is not sufficient, it is recommended to the professional examination of the breast after breast milk is confirmed using suction and smooth milk under normal conditions
8. Before use, please check whether the fittings are correct and tight
9. Clean and disinfect the parts before use, wash immediately node and keep the components dry
10. This product is only for the purpose described in the instructions
11. If there is residual material smell is a normal phenomenon first use before cleaning products according to the cleaning method, can effectively reduce or eliminate the residual odor

Cleaning and Disinfection Methods

1. All parts can be disinfected disinfection suggested the use of professional disinfectant
2. Silicone parts, please use the soft sea surface cleaning rough cleaning is easy to cause damage or scratches
3. If there is no professional sterilizer, disinfection parts will be placed in boiling

water disinfection for 5 minutes disinfection, avoid the product hit the bottom of the pot, resulting in damage to components.

Pump parts and Components Description



1. Dust cover
2. 3D massage pad
3. Connector
4. Fastening cover
5. Silica gel cylinder
6. Carry ring
7. Handle
8. Duckbill valve
9. 150ml bottle

Specification:

Vacuum	-250mmHG	
Breastshield Size	24mm or 27mm	
Unit Weight	Approx. 189g	
Unit Size	205X186X90mm	
Operating Environment	Temperature	5°C~40°C(41°F~104°F)
	Humidity	15~93%
	Pressure	700hPa~1060hPa
Storage Environment	Temperature	-20°C~55°C(-4°F~131°F)
	Humidity	15~95%
	Pressure	Atmospheric Pressure