



Therapy Massager

Model No. OEM101

INSTRUCTION MANUAL



* Please read the instruction manual before use

Intend Use:

The therapy massager helps relieve muscle tension, improve blood circulation, promote better sleep, and reduce stress.

Caution:

- Do not use this device if you are pregnant, have heart conditions, or suffer from any physical injury. Consult your physician before use if you are unsure.
- Use the device only at least one hour after meals.
- Keep the device out of reach of children.
- Do not use the device on the same body area for more than 15 minutes at a time.
- Do not use the device in the bathroom or in humid or wet environments.
- If the device malfunctions or operates abnormally, switch off the power immediately and contact the authorized after-sales service center.
- Do not use the device if you are feeling unwell.
- Ensure the device is completely switched off and unplugged before changing massage heads.
- If the power cord is damaged, it must be replaced only by an authorized service technician.

Product Specification:

Product Name	Therapy Massager
Rated Voltage	220V~240V
Frequency	50~60 Hz
Rated Power	10~30 W

Maintenance & Storage:

- Clean the device using a soft, dry cloth. If required, use a neutral detergent only.
- Do not allow water or any liquid to enter the device.
- Store the device in a cool, dry place after use. Avoid exposure to high temperatures, direct sunlight, and corrosive gases.
- Always unplug the unit when it is not in use.

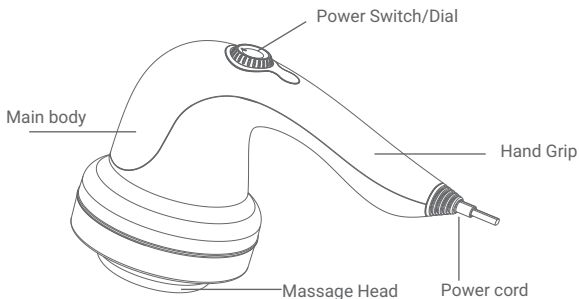
This next-generation handheld massager features a streamlined, feather-light design combined with powerful massage performance. Engineered to deliver deep, effective vibrations, it helps relax tired muscles, improve circulation, and ease daily body strain.

Designed for versatile use, the massager is suitable for multiple body areas including the waist, back, shoulders, arms, hips, thighs, calves, abdomen, and buttocks. Its ergonomic design allows for comfortable handling, making it easy to enjoy a soothing massage anytime, anywhere.

Regular use helps you unwind, relieve muscle tension, and support overall body relaxation with minimal effort.



Parts and Functions



Multiple massage attachments for choice:



Flat massage head



Wavy massage head



Ball massage head



Dead skin removal head



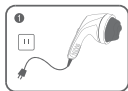
Mesh cover

(The massage head is configured with a real sample package)

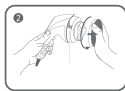
Usage of massage attachments:

1. Flat massage head: Decompression massage, weight-loss massage for face, abdominal.
2. Wavy massage head: Acupuncture points and deep tissue massage.
3. Ball massage head: can be used with essential oil as you like.
4. Dead skin removal head: Remove calluses and dry skin for feet.
(Notice: Do not use mesh cover when micro filer massage head is attached.)
5. Mesh cover: Prevent hair involved in machines, protect hair safety.

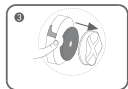
Directions for use :



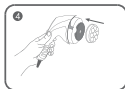
Switch off the device and unplug it from the power supply before replacing the massage head.



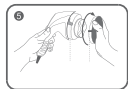
Twist the mesh safety cover to unlock and remove it. To reattach, align the cover over the massage head, slide it down, and twist to lock it securely in place.



After removing the mesh safety cover, gently but firmly pull the massage head straight away from the main body. Avoid twisting or angling the massage head.



Once the massage head slides completely off the center disk, attach your preferred massage head by aligning it with the center disk and pushing it straight down until secure.



Reinstall the mesh safety cover and ensure it is properly locked.



Plug the device back into the power supply and switch it on for use.

Operation:

- Connect the power plug to a wall electrical outlet.
- Turn the power dial clockwise to switch the device ON.
- Adjust the massage speed as required by turning the dial clockwise or counter-clockwise.
- For first-time use, start with a low massage speed and gradually increase it as your body adapts.
- After use, turn the power dial counter-clockwise until it stops to switch the device OFF, then unplug it from the electrical outlet.
- During initial use, avoid applying the massager directly on bare skin until you are comfortable with the sensation.
- Use a moderate massage speed and move the device gently back and forth over the desired area.

WARRANTY CARD	
Model No.:.....	Lot No.:.....
Invoice No.:.....	Date of Purchase.....
Purchased By:.....	Contact No.:.....
Address.....	
Dealer's Name.....	
Dealer's Sign & Stamp	

* Terms & Conditions apply

Passim Lifesciences Ltd. warrants this unit to be free from defects in material, workmanship, and operation under normal use for a period of one year from the date of purchase. If any part become defective during the warranty period Passim Lifesciences Ltd. will repair or replace (if not repairable) the same, free of cost. This shall not apply to any parts that are considered as expandible or deteriorable in the course of normal use. Passim Lifesciences Ltd. shall be relieved of any liability and warranty shall cease to apply if :

- This is not used in accordance with the instructions in the operational manual.
- It is used with any equipment not complying with the specification of this unit.
- It is not regularly maintained.
- The unit is disassembled, repaired or operated by person not authorized by Passim Lifesciences Ltd.
- Damage caused due to negligence.
- The unit is operated in corrosive materials or in the harmful atmosphere.
- The warranty card is not filled completely and produced at the time of warranty claim.

SYMBOL

 Medical Device	 Manufactured By	 Warning/Caution	 Manufacturing Date
 Refer Instructions Manual	 Keep Away From Sunlight	 Serial No.	
 Do not use If Package damaged	 Must not be exposed in rain or excessive moisture	 Lot No.	 No Trash

Manufactured by:

Passim Lifesciences Ltd.

Plot No. 45, Ind. Area, Phase-II, Panchkula - 134113, Haryana-INDIA

Test Lic. No.: MFG/MD/2022/000615

For any Complaint /

Suggestion please contact:

Customer care Number:

1800 309 3009

Timing: 9am-7pm, Mon.-Sat.

Email ID: customercare@drodin.in,

Website: www.drodin.in

IM/OEM/109-00